



# EZ Shrink Pack 2019

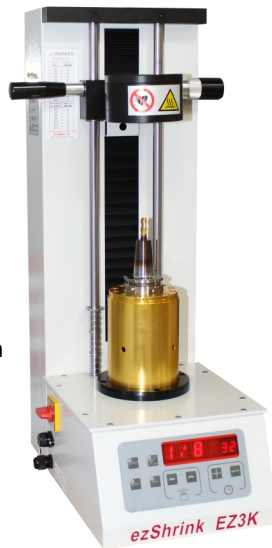
Complete Shrink Fit Heating & Water Cooling System



## What's Included in the Package:

### EZ Shrink Unit

- \* #EZ-SHRINK-EZ3K
- \* 1/8-3/4 Capacity (1-1/4 with Optional Coil)
- \* 220V, 20A Single Phase Power
- \* 3kw Output
- \* For tools with up to a 12.50 Projection
- \* 1 Year Limited Warranty
- \* **30 Second Cycle Time**



### EZ Cooling Unit

- \* #EZ-COOL-EZ3W-KIT
- \* Water Cooling with Shop Coolant (Water Based)
- \* Separate Cooling, cool 1st tool while heating the 2nd
- \* 110V, 16A
- \* 1 Year Limited Warranty
- \* **30 Second Cycle Time**



**(2) EZ-Base**  
Tool Holder Base



**EZ-COOL-EXT**  
Cooling Extension



**EZ-GLOVE**  
Safety Gloves



**EZ-ROUND-TRAY**  
Cutter Storage Tray

### (5) Shrink Fit Holders

Pick any 5 standard length holders listed on the back page.



#### \*Optional 1-1/4 Heating Coil

EZ-SHRINK-EZ3K COIL 32MM  
Required for 1" and 1-1/4" Holders

**Additional \$550.00**



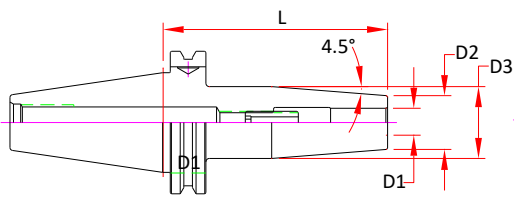
↓↓ Select your package below ↓↓

CAT40	DCAT40**	CAT50	DBT30**	BT40	HSK63A	HSK100A
Package for only: <b>\$5,800</b>	Package for only: <b>\$6,000</b>	Package for only: <b>\$6,500</b>	Package for only: <b>\$6,100</b>	Package for only: <b>\$6,100</b>	Package for only: <b>\$6,200</b>	Package for only: <b>\$6,600</b>

\* Optional 1-1/4 Heating Coil required for all tooling larger than 3/4" listed on the back of this flyer.

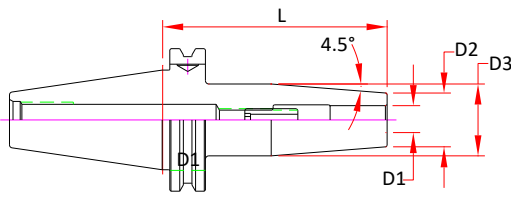
\*\*DBT30 & DCAT40 are Dual Contact for Face Contact Spindles, may work in standard spindle if the spindle conforms to JMTBA & ANSI standards.

All pricing shown in USD and do not include any taxes. International customers are subject to any and all duty's and additional taxes that may apply. International customers are responsible for freight charges from warranty claims. Limited time only. All prices subject to change without notice. Contact our customer service department for details and pricing.



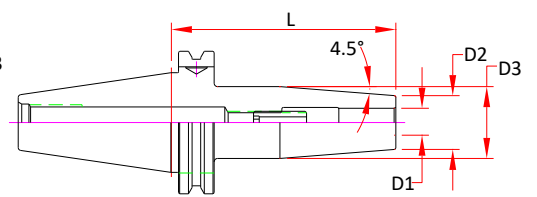
### CAT40

Part Number	D1	D2	D3	L
CAT40-SD025-080	0.2500	0.83	1.06	3.15
CAT40-SD031-080	0.3125	0.83	1.06	3.15
CAT40-SD037-080	0.3750	0.94	1.26	3.15
CAT40-SD043-080	0.4375	0.94	1.26	3.15
CAT40-SD050-080	0.5000	0.94	1.26	3.15
CAT40-SD062-080	0.6250	1.06	1.34	3.15
CAT40-SD075-080	0.7500	1.30	1.65	3.15
CAT40-SD100-100*	1.0000	1.73	2.09	3.94
CAT40-SD125-100*	1.2500	1.73	2.09	3.94



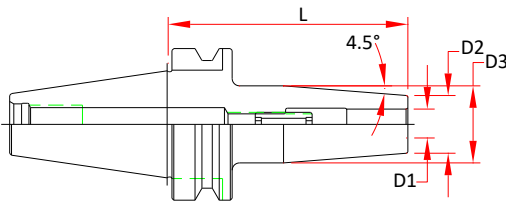
### DCAT40\*\* (Dual Contact)

Part Number	D1	D2	D3	L
DCAT40-SD025-080	0.2500	0.83	1.06	3.15
DCAT40-SD037-080	0.3750	0.94	1.26	3.15
DCAT40-SD050-080	0.5000	0.94	1.26	3.15
DCAT40-SD062-080	0.6250	1.06	1.34	3.15
DCAT40-SD075-080	0.7500	1.30	1.65	3.15
DCAT40-SD100-100*	1.0000	1.73	2.09	3.94



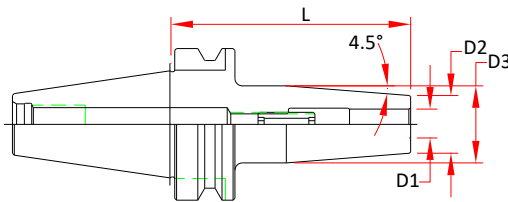
### CAT50

Part Number	D1	D2	D3	L
CAT50-SD025-080	0.2500	0.83	1.06	3.15
CAT50-SD031-080	0.3125	0.83	1.06	3.15
CAT50-SD037-080	0.3750	0.94	1.24	3.15
CAT50-SD050-080	0.5000	0.94	1.24	3.15
CAT50-SD062-080	0.6250	1.06	1.34	3.15
CAT50-SD075-080	0.7500	1.30	1.61	3.15
CAT50-SD100-100*	1.0000	1.73	2.09	3.94
CAT50-SD125-100*	1.2500	1.73	2.09	3.94



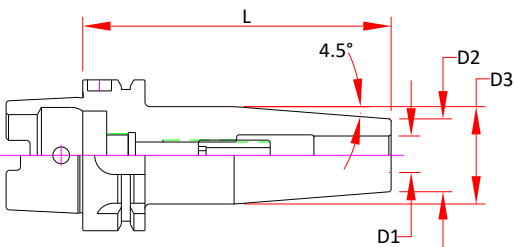
### DBT30\*\* (Dual Contact)

Part Number	D1	D2	D3	L
DBT30-SD025-080	0.2500	0.83	1.06	3.15
DBT30-SD031-080	0.3125	0.83	1.06	3.15
DBT30-SD037-080	0.3750	0.94	1.26	3.15
DBT30-SD050-080	0.5000	0.94	1.26	3.15
DBT30-SD062-080	0.6250	1.06	1.34	3.15
DBT30-SD075-090	0.7500	1.30	1.65	3.54



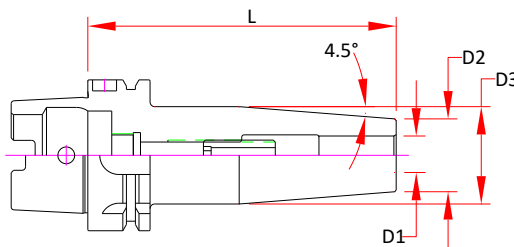
### BT40

Part Number	D1	D2	D3	L
BT40-SD025-090	0.2500	0.83	1.06	3.54
BT40-SD031-090	0.3125	0.83	1.06	3.54
BT40-SD037-090	0.3750	0.94	1.26	3.54
BT40-SD050-090	0.5000	0.94	1.26	3.54
BT40-SD062-090	0.6250	1.06	1.34	3.54
BT40-SD075-090	0.7500	1.30	1.65	3.54
BT40-SD100-100*	1.0000	1.73	2.09	3.94
BT40-SD125-100*	1.2500	1.73	2.09	3.94



### HSK63A

Part Number	D1	D2	D3	L
HSK 63A-SD025-080	0.2500	0.83	1.06	3.15
HSK 63A-SD031-080	0.3125	0.83	1.06	3.15
HSK 63A-SD037-085	0.3750	0.94	1.06	3.35
HSK 63A-SD050-090	0.5000	0.94	1.26	3.54
HSK 63A-SD062-095	0.6250	1.06	1.34	3.74
HSK 63A-SD075-100	0.7500	1.30	1.65	3.94
HSK 63A-SD100-115*	1.0000	1.73	2.09	4.53
HSK 63A-SD125-120*	1.2500	1.73	2.09	4.72



### HSK100A

Part Number	D1	D2	D3	L
HSK100A-SD025-085	0.2500	0.83	1.06	3.35
HSK100A-SD031-085	0.3125	0.83	1.06	3.35
HSK100A-SD037-090	0.3750	0.94	1.24	3.54
HSK100A-SD050-095	0.5000	0.94	1.26	3.74
HSK100A-SD062-100	0.6250	1.06	1.34	3.94
HSK100A-SD075-105	0.7500	1.30	1.61	4.13
HSK100A-SD100-115*	1.0000	1.73	2.09	4.53
HSK100A-SD125-120*	1.2500	1.73	2.09	4.72

**PIONEER N.A., INC.** Premium Tool & Work Holding

641 Fargo Ave., Elk Grove Village, IL 60007

sales@PioneerNA.com | 847-593-6000 | www.PioneerNA.com

\* Optional 1-1/4 Heating Coil required for all tooling larger than 3/4".

\*\*DBT30 & DCAT40 are Dual Contact for Face Contact Spindles, may work in standard spindle if the spindle conforms to JMTBA & ANSI standards.