



Tool Karts

Trolley-Kart



BB-15-0 Kart



BB-15-0 Kart
with 5 Tool Holder Racks Installed

Part Number	Description
BB-15-0	NC Trolley-Kart Made of heavy gauge steel, holds 5 Tool holder Racks , Sold Separately

Tool Holder Rack for Trolley-Kart



BB-9-0 Tool Holder Rack



BB-9-1 Anti-Tip Shelf - Recommended for long (8"+) or nose heavy tools

Part Number	Description
BB-9-0	40 Taper Tool Holder Rack
BB-9-1	Anti-Tip Shelf for 40 Taper Tool Holder Rack
BB-9-2	Handles for 40 Taper Tool Holder Rack
BB-10-0	50 Taper NC Tool Holder Rack
BB-10-2	Anti-Tip Shelf for 50 Taper NC Tool Holder Rack
BB-10-3	Handles for 50 Taper NC Tool Holder Rack
BB-11-0	30 Taper NC Tool Holder Rack
BB-11-1	Anti-Tip Shelf for 30 Taper NC Tool Holder Rack
BB-11-2	Handles for 30 Taper NC Tool Holder Rack

Econo-Kart



BB-3001 Kart



BB-3001 Kart
w/ Optional DA Shelf and Locking Fixture

Part Number	Description
BB-3001	40 Taper Econo-Kart (50 Holes)
BB-3001-DA	40 Taper Econo-Kart w/ Double Angle Shelf (57 Holes)
BB-3002	Optional 2nd Shelf 40 Taper Econo-Kart (50 Holes)
BB-3002-DA	Optional 2nd Shelf 40 Taper Econo-Kart w/ Double Angle Shelf (57 Holes)
BB-3003	40 Taper Tool Tightening Fixture
BB-3007	50 Taper Econo-Kart (32 Holes)
BB-3007-DA	50 Taper Econo-Kart w/ Double Angle Shelf (30 Holes)
BB-3008	Optional 2nd Shelf 50 Taper Econo-Kart (32 Holes)
BB-3008-DA	Optional 2nd Shelf 50 Taper Econo-Kart w/ Double Angle Shelf (30 Holes)
BB-3009	50 Taper Tool Tightening Fixture
BB-3011	Flat Shelf
BB-3012	Optional Drawer



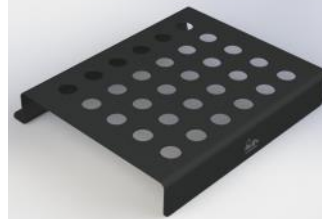
Tool Karts

Kounter-Kaddy



Part Number	Description
BB-17-1	30 Taper (30 holes)
BB-17-2	40 Taper (30 holes)
BB-17-3	50 Taper (24 holes)

Collet Racks



Part Number	Description
BB-2011	ER11 Collet Tray (36 Holes)
BB-2016	ER16 Collet Tray (36 Holes)
BB-2020	ER20 Collet Tray (36 Holes)
BB-2025	ER25 Collet Tray (30 Holes)
BB-2032	ER32 Collet Tray (30 Holes)
BB-2040	ER40 Collet Tray (24 Holes)
BB-5	RA1 / TG075 Collet Tray (45 Holes)
BB-4	RA2 / TG100 Collet Tray (35 Holes)
BB-3	RA3 / TG150 Collet Tray (25 Holes)